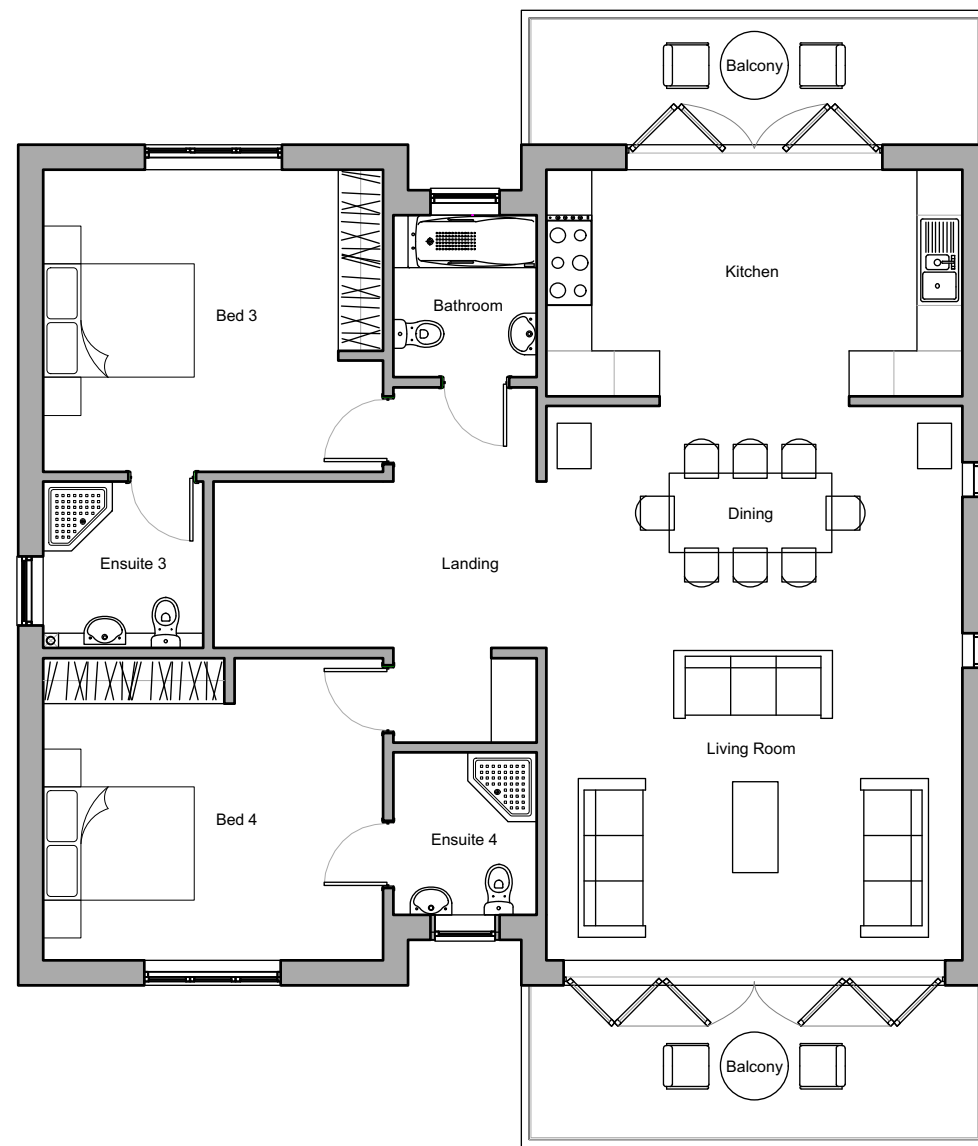


Type A
 5 Bed - Ground Floor
 Gross internal floor area: 110.68m² / 1191 sq ft
 Total: GIA 235.25m² / 2531 sq ft



Type A
 4 Bed - First Floor
 Gross internal floor area: 124.57m² / 1340 sq ft



Revisions

CHARTERED ARCHITECTS
 QUANTITY SURVEYORS
 CLIENTS AGENTS
 PFI CONSULTANTS



East Quay, Kite Hill
 Wootton Bridge
 Isle of Wight PO33 4LA
 Tel: 01983 242500

www.raineypetrie.co.uk Email: info@raineypetrie.co.uk

Client:

Project:
Seagrove Farm, Seaview, Isle of Wight

Drawing title:
Type A Unit Plans

scale: 1:100 @ A3 date: May 2018 drawn: TH
 stage: Planning checked by:

job number: 2122 drawing number: PL02 revision: